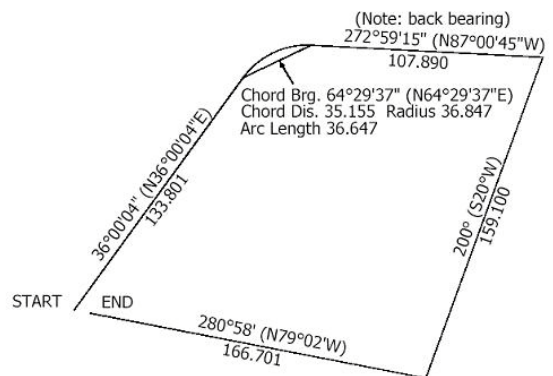


## Quickclose training

In response to customer demand we now offer an evening training course in the Quickclose software. Two modules are available, so here's your chance to:

- Meet the author
- Ask the questions you always wanted to ask
- Get a kick-start in using Quickclose
- Get CPD points: 1 point (intro) and 1.5 point (advanced)



### "Introduction to Quickclose" (Free)

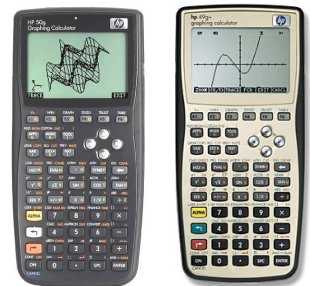
A demonstration of the most commonly used functions of Quickclose:

- Data entry and computing misclose and area
- Viewing and editing data
- Computing missing bearings and distances
- Bowditch adjustment
- Computing traverse coordinates, radiations and inverses
- Level run data entry, reduction and adjustment

### "Advanced Quickclose" (\$ 60 fee, includes manual and demo CD)

An interactive demonstration of the more advanced functions of Quickclose including:

- Computing intersections and resections
- Curve/line offset computations
- Coordinate transformation and adjustment
- Computing MGA/GDA coordinates from ground measurements
- MGA/GDA computations
- Computing and setting out a road alignment



**\$\$\$ Special Quickclose/ Calculator offers on the night! \$\$\$**

#### Time

Wednesday 7<sup>th</sup> March 2007

5:30 -6:30 pm Introduction to Quickclose

7:00 -8:30 pm Advanced Quickclose

#### Place

Total Survey Systems Pty Ltd

7 South Street (corner Euston Street)

Rydalmere NSW 2116

Registering is required and places are limited, so please fax back to 96383933 to reserve your seat! Bring your own calculator along if you have one (not essential)

YES, I want to attend:  Introduction to Quickclose (5:30 – 6:30 pm)  
 Advanced Quickclose (7:00 – 8:30 pm)  
 (tick one or both)

Your name \_\_\_\_\_  
 Company name \_\_\_\_\_  
 Address \_\_\_\_\_  
 Suburb/ Post code \_\_\_\_\_  
 Phone \_\_\_\_\_  
 e-mail address \_\_\_\_\_

Total Survey Systems Pty Ltd  
 7 South Street  
 Rydalmere NSW 2116  
 Ph 9638 0055 Fax 9638 3933  
 www.totalsurvey.com.au