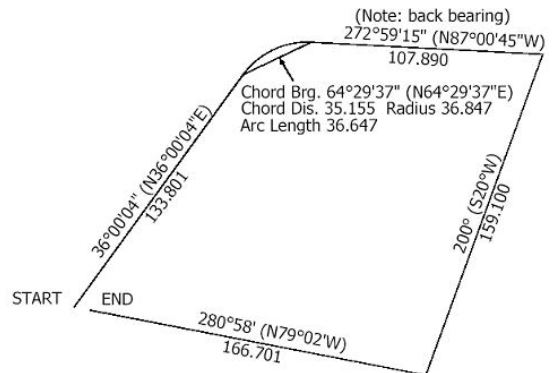




Quickclose training 2008

It's back again – the evening training course in the Quickclose software. Two modules are available, so here's your chance to:

- Meet the author
- Ask the questions you always wanted to ask
- Get a kick-start in using Quickclose
- Get CPD points (to be confirmed)



"Introduction to Quickclose" (Free)

A demonstration of the most commonly used functions of Quickclose:

- Data entry and computing misclose and area
- Viewing and editing data
- Computing missing bearings and distances
- Bowditch adjustment
- Computing traverse coordinates, radiations and inverses
- Level run data entry, reduction and adjustment



"Advanced Quickclose" (\$ 80 fee, includes manual and demo CD)

An interactive demonstration of the more advanced functions of Quickclose including:

- Computing intersections and resections
- Curve/line offset computations
- Coordinate transformation and adjustment
- Computing MGA/GDA coordinates from ground measurements
- MGA/GDA computations
- Computing and setting out a road alignment

\$\$\$ Special Quickclose/ Calculator offers on the night! \$\$\$

Time

Wednesday 28th May 2008
5:30 -6:30 pm Introduction to Quickclose
7:00 -8:30 pm Advanced Quickclose

Place

Total Survey Systems Pty Ltd
7 South Street (corner Euston Street)
Rydalmere NSW 2116

Registering is required and places are limited, so please fax back to 96383933 to reserve your seat! Bring your own calculator along if you have one (not essential)

YES, I want to attend: Introduction to Quickclose (5:30 – 6:30 pm)
(tick one or both) Advanced Quickclose (7:00 – 8:30 pm)

Your name _____
 Company name _____
 Address _____
 Suburb/ Post code _____
 Phone _____
 e-mail address _____

Total Survey Systems Pty Ltd
7 South Street
Rydalmere NSW 2116
Ph 9638 0055 Fax 9638 3933
www.totalsurvey.com.au